

We have shared office space (attached diagram) to offer to a non-profit or charity at \$750 month all utilities included.

The space can be used for meetings, office or storage. Please have interested parties contact us by email.

Take care & have a great day.

Doug Perrault - Paralegal, Notary Public, Commissioner of Oaths

CPSM, CRSP NP, CHSC, GSCSC

Ottawa & District Injured Workers' Group

12 C, 1516 Merivale Rd Ottawa K2G 3J6

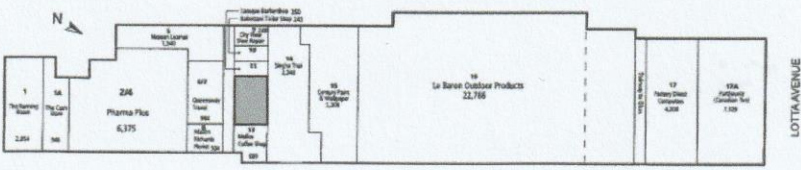
Ph 613- 567-5872

Email [ottawainjuredworkersgroup@gmail.com](mailto:ottawainjuredworkersgroup@gmail.com)

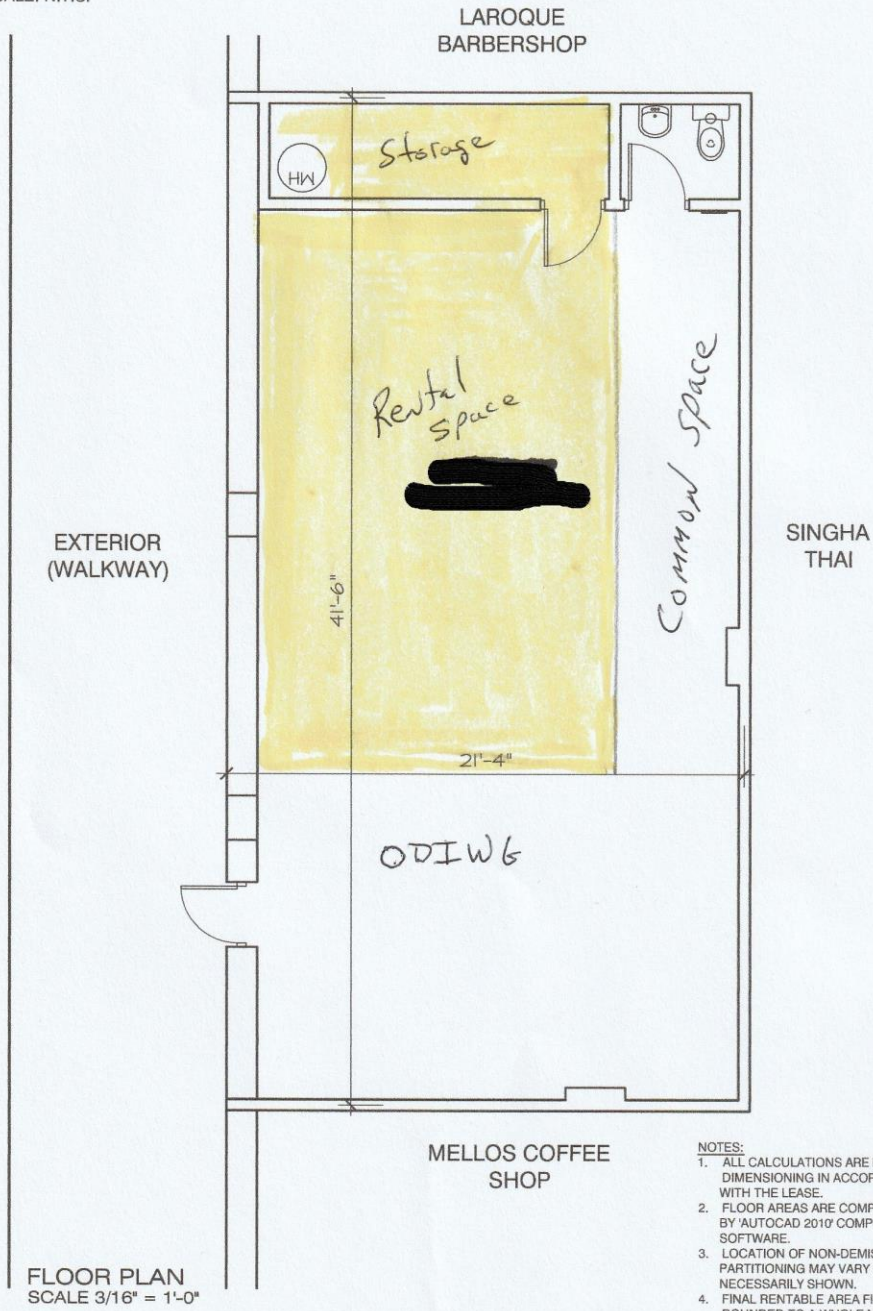
<https://www.ottawa-injured.com/>

Facebook <https://www.facebook.com/ODIWG/>





KEY PLAN - GROUND FLOOR  
SCALE: N.T.S.



FLOOR PLAN  
SCALE 3/16" = 1'-0"

- NOTES:
1. ALL CALCULATIONS ARE BASED ON DIMENSIONING IN ACCORDANCE WITH THE LEASE.
  2. FLOOR AREAS ARE COMPUTED BY 'AUTOCAD 2010' COMPUTER SOFTWARE.
  3. LOCATION OF NON-DEMISING PARTITIONING MAY VARY OR IS NOT NECESSARILY SHOWN.
  4. FINAL RENTABLE AREA FIGURE IS ROUNDED TO A WHOLE NUMBER.

<p><b>LEONARD KOFFMAN ARCHITECT</b> Suite 301, 1300 Carling Avenue OTTAWA, Ontario K1Z 7L2 Phone (613) 729-2211 Fax (613) 729-1558 E-mail: lkoffman@travel-net.com</p>	<p><b>PROJECT</b> CITY VIEW PLAZA 1508-1515 MERIVALE ROAD</p> <p><b>DRAWING TITLE</b> SABA SPA TENANT AREA CERTIFICATION</p>	<p><b>DRAWN</b> MD</p> <p><b>DATE</b> MAY 3/10</p> <p><b>SCALE</b> 3/16" = 1'-0"</p>	<p><b>PROJECT N°</b> 0817-SPA</p> <p><b>DRAWING N°</b> TAC-SPA</p>
--	--	--	--